

Prayer Shawl Ministers

Meet once a month
September - May.

There are two
opportunities to get
together, share ideas
and pray on the third
Tuesday of each month:
1:00 p.m.—2:30 p.m.

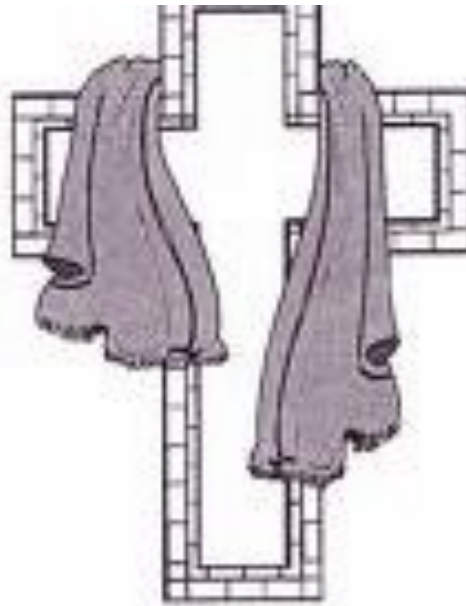
In the gathering space

OR

6:30 p.m.—8:00 p.m.

In the gathering space

If you are unable to
attend the meetings you
may still participate in
this ministry in your
home.



Prayer Shawl Ministry



St. Charles Borromeo

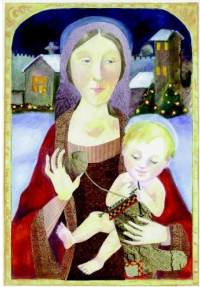
5571 S. Marilyn St.
Milwaukee, WI 53221

Phone: 414.281.8115

Fax: 414.281.8150

E-mail: mbejma@scbmil.org

Prayer Shawl Ministry



“Shawls... made
for centuries
universal and
embracing,

symbolic of an inclusive,
unconditionally loving, God.
They wrap, unfold, comfort,
cover, give solace, mother,
hug, shelter and beautify.
Those who have received
these shawls have been up-
lifted and affirmed, an if
given wings to fly above
their troubles...”

Written in 1998 by: Janet Bristow

About the Shawls...

Whether they are called Prayer Shawls, Comfort Shawls, Peace Shawls, or Mantles, etc., the shawl maker begins with prayers and blessings for the recipient. The intentions are continued throughout the creation of the shawl. Upon completion, a final blessing is offered before the shawl is sent on its way. Some recipients have continued the kindness by making a shawl and passing it onto someone in need. Thus, the blessing ripples from person-to-person, with both the giver and receiver feeling the unconditional embrace of a sheltering, mothering God!

Compassion and the love of knitting/crocheting have been combined into a prayerful ministry and spiritual practice which reaches out to those in need of comfort and solace, as well as in celebration and joy. Many blessings are prayed into every shawl.

Distribution of Shawls

Our blessed shawls are prayed over and presented to:

- ◆ the homebound
- ◆ residents in health care facilities
- ◆ the sick
- ◆ those undergoing medical procedures
- ◆ those recovering from surgeries
- ◆ the bereaved
- ◆ cancer patients

